

convection oven ge profile manual



File Name: convection oven ge profile manual.pdf

Size: 4893 KB

Type: PDF, ePub, eBook

Category: Book

Uploaded: 25 May 2019, 21:29 PM

Rating: 4.6/5 from 568 votes.

Status: AVAILABLE

Last checked: 18 Minutes ago!

In order to read or download convection oven ge profile manual ebook, you need to create a FREE account.

[**Download Now!**](#)

eBook includes PDF, ePub and Kindle version

[Register a free 1 month Trial Account.](#)

[Download as many books as you like \(Personal use\)](#)

[Cancel the membership at any time if not satisfied.](#)

[Join Over 80000 Happy Readers](#)

Book Descriptions:

We have made it easy for you to find a PDF Ebooks without any digging. And by having access to our ebooks online or by storing it on your computer, you have convenient answers with convection oven ge profile manual . To get started finding convection oven ge profile manual , you are right to find our website which has a comprehensive collection of manuals listed.

Our library is the biggest of these that have literally hundreds of thousands of different products represented.



Book Descriptions:

convection oven ge profile manual



Up and Down arrows will open main level menus and toggle through sub tier links. Enter and space open menus and escape closes them as well. Tab will move on to the next part of the site rather than go through menu items. Download a digital copy of your owners manual, use and care manual, installation information, and energy guides. You can save paper and ink by printing only the pages for the language you need. General Electric SelfCleaning Dual Fuel Convection Ranges Owners Manual and Installation Instructions. GE PROFILE Built In Oven, Electric Owners Manual, GE PROFILE Built In Oven, Electric Download the manual Ge Profile electric convection builtin oven. Manuals for ge profile microwave convection oven jvm1790bk01. User manuals, Ge Convection oven Operating guides and Service manuals. JVM1790BK Profile 1.7 cu. Ft. Convection Microwave. Reload to refresh your session. Reload to refresh your session. Manufactured under trademark license. We take pride in the craftsmanship, innovation and design that goes into every GE Appliances product, and we think you will too. Among other things, registration of your appliance ensures that we can deliver important product information and warranty details when you need them. Register your GE appliance now online. Helpful websites and phone numbers are available in the Consumer Support section of this Owner's Manual. You may also mail in the preprinted registration card included in the packing material. IMPORTANT SAFETY INFORMATION READ ALL INSTRUCTIONS BEFORE USING THE APPLIANCE WARNING Read all safety ins GE General Electric Wall Ovens Monday Friday 7 a.m. 10 p.m. ET. Saturday Sunday 8 a.m. 6 p.m. E Twitter Fan Page Website Correct it, if wrong. And by having access to our ebooks online or by storing it on your computer, you have convenient answers with Ge Profile Oven User Manual. To get started finding Ge Profile Oven User Manual, you are right to find our website which has a comprehensive collection of manuals listed. <http://dolina-climata.ru/img/lib/fender-volume-tone-pedal-manual.xml>

- **convection oven ge profile manual, ge profile convection wall oven manual, ge profile dual fuel convection oven manual, ge profile performance spectra convection oven manual, ge profile microwave convection oven owner manual, 1.0, convection oven ge profile manual, ge profile convection wall oven manual, ge profile dual fuel convection oven manual, ge profile performance spectra convection oven manual, ge profile microwave convection oven owner manual.**

PB950SF

GE Profile™ Series 30" Free-Standing Double Oven Range with Convection

Features and Benefits

- Double Oven 6.6 cu. ft. Total Oven Capacity - Cook multiple dishes at once with two ovens
- True European Convection with Precise Air - Enjoy perfectly even results without turning the pan
- 679/112" 3600W Power Boil - Pots and pans fit perfectly on the flexible heating element
- Expandable Bridge Zone - Use only the heat you need with an expandable cooktop zone
- Fast Preheat - Make hot meals in a hurry with less time preheating
- Self-Clean Heavy-Duty Roller Rack - Easily access items with racks that glide smoothly
- Glass Touch Controls - Set temperatures quickly and clean with little effort
- Black Glass Oven Interior - Enjoy a clean and sleek appearance
- Fifth Element Warming Zone - Provides low heat capability for foods
- Self-Clean Oven - Cleans the oven cavity without the need for scrubbing
- Model PB950SF55 - Stainless steel



Specification Created 6/13 221043

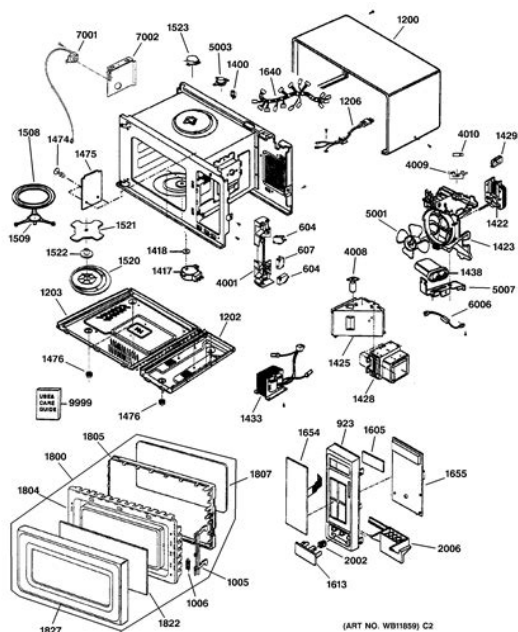
Our library is the biggest of these that have literally hundreds of thousands of different products represented. I get my most wanted eBook Many thanks If there is a survey it only takes 5 minutes, try any survey which works for you. Depression, ADHD, memory loss, agitation These may seem like inevitable byproducts of modern lives spent multitasking, not getting enough sleep, and operating on digital overload. But while much of the brain's work still remains a mystery, a growing body of scientific evidence suggests that the food you eat directly affects how well your brain functions. Brain health also pl. The guests range from super celebs Jamie Foxx, Arnold Schwarzenegger, etc. and athletes icons of powerlifting, gymnastics, surfing, etc. to legendary Special Operations commanders and blackmarket biochemists. For most of my guests, it's the first time they. Please upgrade your browser or activate Google Chrome Frame to improve your experience. Maybe try one of the links below or a search. And by having access to our ebooks online or by storing it on your computer, you have convenient answers with Ge Oven Manual. To get started finding Ge Oven Manual, you are right to find our website which has a comprehensive collection of manuals listed. Our library is the biggest of these that have literally hundreds of thousands of different products represented. I get my most wanted eBook Many thanks If there is a survey it only takes 5 minutes, try any survey which works for you. Se voce continuar a navegar o site, voce aceita o uso de cookies. Leia nosso Contrato do Usuario e nossa Politica de Privacidade. Se voce continuar a utilizar o site, voce aceita o uso de cookies. Leia nossa Politica de Privacidade e nosso Contrato do Usuario para obter mais detalhes. Alem disso, serao aplicados os Termos gerais de uso e a Politica de Privacidade da Scribd. Se prefira sair da plataforma, por favor, encerre sua conta do SlideShare. Saiba mais. <http://adanavidalikompresor.com/userfiles/fender-yale-reverb-manual.xml>



Altere suas preferencias de anuncios quando desejar. Compartilheo! File Type PDF. File Size 385.54. Publish Date 18 Nov, 2014. Save this Book to Read ge profile convection oven installation manual PDF eBook at our Online Library. Get ge profile convection oven installation manual PDF file for free from our online library. PDF file ge profile convection oven installation manual Page 1MANUAL Its strongly suggested to begin browse the Intro section,Or perhaps in case you actually identify aAccording to our log, this PDF file is submitted on 18 Nov, 2014, registeredFile ID TKEFXWGLSY. File Type PDF. File Size 385.54. Publish Date 18 Nov, 2014. Save this Book to Read ge profile convection oven installation manual PDF eBook at our Online Library. Get ge profile convection oven installation manual PDF file for free from our online library. PDF file ge profile convection oven installation manual Page 2Download. Ge Profile Convection Oven Installation Manual. Instruction. Save this Book to Read ge profile convection oven installation manual PDF eBook at our Online Library. Get ge profile convection oven installation manual PDF file for free from our online library. PDF file ge profile convection oven installation manual Page 3Agora, personalize o nome do seu painel de recortes. If youre lucky enough to own a General Electric oven with a GE oven delay start, you may find yourself using this feature more often than youre tempted to order takeout food. You can either use the delay start option to delay when the oven comes on or before the oven starts selfcleaning. This feature can be called a variety of things such as delay start, delay time or delay bake, so you must go over your owners manual to see what your specific feature is called. When using the delay start option, you have to program the cooking or selfcleaning mode, when you want your oven to start as well as the cooking temperature.

Its important to note that although the GE oven delay start option will turn the oven on at a specific time, according to GE Appliances, some older models dont have a GE oven automatic shut off option. You have to shut off the oven manually. This feature will allow you to set the oven to turn on and off, but you have to input the hours you want the oven to run manually. If you have a range without electronic controls, before you delay start your oven, you need to make sure that the range clock is set to the right time and day.Theyre also numbered by the hour. To move these dials, you have to push the knob in, and it will make a sound as theyre turning.Youll know its on because the bake indicator light will stay on. Its important to note that you cant use the time bake and temperature cook options at the same time. Page Count 4 Overview, Product. Free kitchen appliance userBowls With Locking. GE Appliances owners manuals page offers specific useAppliances as well as Quick Specs and Energy. I have a set of burner covers and the owners manual. The only thing that needs to be done is toJust like some of the other parts on a GE stove the electricGE Electric. Range Owners Manual How to Take the Oven Door Off of GE Spectra XL44. Ge Spectra Electric Range Owners Manual. File Type Extension pdf. PDF Version 1.4. Linearized No. Author Softplicity. Subject. Page

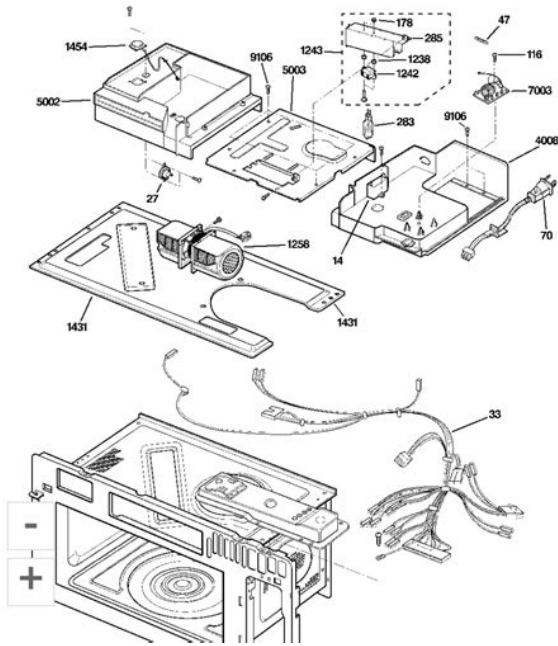
Count 4. Page Mode UseOutlines. Description. Creator Softplicity. Title Ge Spectra Electric Range Owners Manual. Creator Tool Softplicity. Keywords. Producer Softplicity. Send a Houzz Gift Card. I read the instructions, which are clear as mud. The oven automatically converted it to 325, and started warming up. There's a fan in the back of the oven and it didn't turn on. I am wondering, isn't that the convection fan, or is that some kind of cooling fan. That fan never did turn on, but the electronic display told me that some kind of fan was running a little lighted up fan picture on the display.



<http://superbia.lgbt/flotaganis/1653202209>

I put 18 minutes on the timer, which is the regular time on the cake mix box figuring I was going to keep an eye on them. When the timer went off, I checked them and didn't even have to stick a toothpick in them because I could tell by sight that they obviously were not cooked. I added 2 minutes several times. They weren't browning, so after about a total of 22 minutes, I did the toothpick check. They were still RUNNY. I was frustrated because I thought that convection was supposed to cook at a lower temperature in LESS time than standard oven. I kept adding minutes, kept looking at them still not done. After about a total of 25 minutes, I shut down the convection and turned on the regular oven to 350 degrees and cooked the cupcakes until they were done. I took them out and they even LOOKED weird. They were flat and over the tops of the cupcake wrappers. I turned the oven OFF, so I could contemplate how I was going to make the 2nd batch. When I turned the oven off, no noise. I noticed that the oven sounded the same as when I had the convection going. The fan in the back of the oven never did turn on. The electronic display said that there was no fan on, indicated by the lack of the lighted up fan on the display. Here are my specific questions 1 what is that fan in the back of the oven. Is that the convection fan and mine is inoperable. Is that some kind of cooling fan. Why didn't it turn on when I was done baking if that is the case 2 How do you know how much you're supposed to be able to reduce the cook time on stuff when using convection Convection is great for cookies, roasted meats, and other things where the sides of the item are accessible. Certain things, need bottom heat souffles, popovers, cupcakes, etc. If it isn't, it sounds like a service call is in order. Even if it does, it will only come on in certain circumstances.

<http://grahambettsmotors.com/images/83-pace-arrow-owners-manual.pdf>



Your oven most likely wasn't hot enough for the cooling fan to come on but you could ask the service person when you call about the convection fan. Asked her to tell me what to do as far as a service call. Cupcakes are a nono. It seems that the other things I've tried have had the same results. Of course, the fan not operating could be the problem! You will get lots of conflicting advice about brands as each individual has different experiences. We have installed KitchenAid with no problems and like the features of their ovens and how the door is done so it is very easy to clean on the inside. The Wolf ovens cook wonderfully and also have an easy clean design..See More KitchenAid vs GE profile appliances Q Comments 45 Thanks for all of the above input. I am currently shopping for my new kitchen appliances as well. In reviewing them all I do notice that the user reviews can vary significantly from what Consumer Reports says. Some of CR recommended products score very poorly from actual user reviews. Has anyone else noticed that. Any thoughts appreciated. Also, for what it's worth, here is a blog that I ran across that offers some repair stats on appliance brands for anyone who is interested. See More Refrigerator GE Monogram or SubZero. Q Comments 61 After years of owning GE refrigerators we recently got a Subzero after many years of wishing for one. Love the looks and the space it offers. For the first time ever, the fresh cilantro bunches we buy have stayed fresh for over 4 weeks. I have noticed that other vegetables are staying fresh longer than in the GE. The downsides of the Subzero Design deficiencies For such an expensive machine, I am disappointed that it does not make clear ice cubes. The ice dispenser does not have a crushed ice option. The water dispenser in the door is also very basic as compared to a GE. The drain pan below the water dispenser is unnecessarily complicated. There is a ridged part and a steel part that come out.

<https://gpwestlondon.com/images/830-case-manual.pdf>



And there is another part beneath both those that water pools under. It is not possible to wipe that one dry. So I am worried about moisture lingering there and growing things that I don't want. Problems I hope with our unit less than a month after installation the control panel display went bust showing only top half of the letter and numbers lit. Thankfully it is under warranty and will be replaced. But not what I expected from an expensive fridge. The water dispenser randomly operates in a mode where water comes down almost like a shower, not in a straight single stream..See More Need help for my kitchen Q Comments 3 I think it is better to get 2 separate pieces if you want a microwave and wall oven. Microwaves have very short life spans compared to wall ovens. I live in a very small town in B.C. and have never had a problem with Bosch repairs but that said I have a Kitchenaid double wall oven that I love but a Bosch DW and WD and love them. My old Bosch DW was 15 yrs. It really depends things that take a short time like cookies won't take less time but roasted meats and poultry will. As I said above, I usually keep the temp. You'll need to experiment a little. If your convection fan isn't working then running the thing in convection mode is like running it in regular mode BUT it sounds like your oven automatically drops the temperature 25 degrees. You should read through the manual to understand the different modes and options on your oven. Then all I had to do was call GE and give them my phone number and tell them exactly what the problem was. They'll have the local appliance repair co. LOL, of course, because I just called for service. But luckily, about 4 minutes into the preheat the fan stopped and never went back on. So, I turned it off and started over with the regular oven. I only know it was on because I can hear it briefly as it turns off. I assume it resumes when the door is shut, although I cannot hear it.

My favorite thing to use convection for is crispy stuff. Many consumers are nervous about using the selfcleaning feature because of the extreme heat, but being informed will boost your confidence. Frequent spillovers and splatters are best handled with frequent cleaning. Pick a time to clean when you'll be at home but out of the kitchen for a few hours to prevent breathing any fumes. Usually, you'll need to remove the racks and wash them separately. Metal racks will discolor and be harder to slide if you leave them in. Enamel-covered racks can be cleaned along with the rest of the oven. Clean up as much baked-on food or grease as you can easily remove. You can scrape it off with a non-scratch spatula. Lock the oven door. You may need to fasten it with a lever or it may lock automatically. This prevents anyone from opening it during the cleaning cycle and being blasted by the heat. Time the cleaning using the controls provided. The time you choose depends on how dirty the oven is. Two hours is usually plenty for light cleaning. Three or four hours might be needed for a dirty oven. Let the oven cool after the cleaning cycle. The oven will turn off automatically when the cleaning cycle is over, but you won't be able to open it until it cools down to regular baking

temperatures. Wipe away ash residue with damp cloth. The cycle should take less than an hour. Don't open the oven door during the cleaning process. When the cycle is finished, let the oven cool down. Then loosen dirt using a scrub brush or nylon scouring pad. Soak up any remaining water with a sponge or cloth and leave the door open to air dry the oven. You can help the cleaning along by turning the oven to 475 degrees Fahrenheit 246 degrees Celsius for an hour or so while its empty. Just put them inside the oven during the selfcleaning cycle. The burned on sauce will be reduced to ash.

<https://creationstationdance.com/wp-content/plugins/formcraft/file-upload/server/content/files/162859cd123cfa--bxr1800h-manual.pdf>

We also share information about your use of our site with our social media, advertising and analytics partners who may combine it with other information that you've provided to them or that they've collected from your use of their services. You consent to our cookies if you continue to use our website. The two ovens together provide a 5. Tip GE Profile ovens equipped with a meat probe come with suggested temperature settings in the owners manual. Warning Use an oven mitt to remove the probe by hand. Do not use tongs on the probe. If the probe is removed before the set temperature is reached, the oven will not turn off automatically. The broil and selfclean options will not work if the probe is plugged in. Remove the probe before selfcleaning the oven. Do not store the probe in the oven. 0 cubicfoot capacity, and multiple cooking modes, including selfclean and delayed bake. Use the meat probe to view internal temperature information on the display panel when youre cooking meats and poultry in the convection oven. Adjust the convection oven rack so that the food will be evenly spaced between the upper and lower bake elements. Insert the probe all the way into the meat until the ring at the end of the probe touches the meat. Insert the probes plug into the outlet on the ovens interior wall. Use the numbered buttons on the control panel to set the oven temperature. Use the numbered buttons on the control panel to set the internal meat temperature, up to 200 degrees Fahrenheit. When the meats internal temperature has reached 100 degrees Fahrenheit, the display will begin to indicate the exact temperature as it rises. When the meat has reached the desired internal temperature, the oven will turn off automatically and sound an audio signal.

<http://gbb.global/blog/boss-fdr-1-manual>